

Making a Difference

Doesn't housing already exist?



Lack of supportive housing and employment have been the major barriers to successful futures for individuals with FASD. To date, there are virtually no programs nation-wide that provide specific FASD-informed support. Group homes for individuals with developmental disabilities or mental illness are a poor fit for most affected young adults.

FASD Communities is offering a solution to the biggest challenge that families face: Meeting the housing, vocational and social needs of this population.

Fewer than 20% of adults with FASD live independently.

Lack of supportive housing is the major barrier.



We Need Your Help Now

Help us launch our first peer-based home, targeted for the Midwest. Your investment today will pay dividends tomorrow.

Donations can be made via check payable to FASD Communities or through PayPal or Intuit on our website.

Together, we can change lives.

FASD Communities

National Headquarters
1516 Avon Way
Honolulu, HI 96822
fasdcommunities@gmail.com
Tel (808) 523-8191
www.fasdcommunities.com



FASD Communities is a registered 501 (c)3 non-profit organization supported by educational and healthcare professionals and community leaders across the United States.



Like us on
Facebook

www.facebook.com/fasdcommunities

www.fasdcommunities.com



www.fasdcommunities.com



Would you let your 14-year-old daughter rent her own apartment?

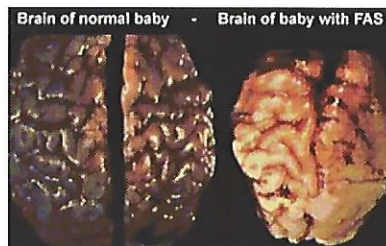
This is the dilemma faced everyday by parents of an adult child with a Fetal Alcohol Spectrum Disorder (FASD) once their child is legally independent. The reality is that individuals with FASD typically function like someone half their chronological age. They grapple with intellectual disabilities that impact learning, judgment, impulse control and understanding cause and effect. As a result, this makes them easy targets for physical, criminal, financial and sexual dangers beyond their understanding.



What is FASD?

What is FASD?

Fetal Alcohol Spectrum Disorder describes the **permanent brain damage** resulting from prenatal exposure to alcohol. FASD is a major cause of cognitive and neurological problems. It can lead to learning disabilities, school failure, homelessness, unemployment and imprisonment.



- Roughly 40,000 U.S. babies - or 1 in 50 - are born with FASD each year.
- The majority of those affected show few, if any, physical signs of disability.
- Because some symptoms are similar, FASD is commonly misdiagnosed as ADHD.
- FASD is more prevalent than autism, Down Syndrome, Muscular Dystrophy, and Spina Bifida combined.
- Thousands of adults are living with this disorder everyday in the U.S.

"We provide ramps and elevators for people living with a physical disability. We also need to provide 'ramps' for those living with an invisible physical disability...by not doing so we are robbing human beings of a quality of life they deserve.

- Jeff Noble, FASD educator

FASD and Your Community

How does FASD affect daily living?

People with FASD have difficulty finding and keeping a job, managing their finances and maintaining peer relationships.

Why do they need protection?

Because their cognitive and social skills are that of a much younger person, they are vulnerable to exploitation by others and to engaging in risky behavior.

Can this disability affect the community?

Fewer than 20% of adults with FASD live independently. Without help, many end up homeless, pregnant or in trouble with the law, costing taxpayers millions of dollars annually.

\$1-5M

Estimated lifetime cost for 1 person with FASD.

\$4B

Estimated annual cost associated with FASD in the U.S.



What can help change their future?

Experience has shown that structured, supportive housing and employment, along with predictable routines, can go a long way in protecting young adults with FASD and helping them become productive members of their communities.

Platteville, Wisconsin

Welcome Home!



Contact us for residency openings!



FASD Communities has opened its first facility for young adults with FASD in the beautiful Platteville, Wisconsin!

This facility provides:

- Supervision
- Safety
- Structure
- Compassionate Staff
- Built in friendship
- Stepping Stones or Forever Homes
- Mentoring and jobs
- Loving and Caring Environment



Collaborating with the University of WI,
Platteville, Agricultural, Educational and
Psychology Departments



Farm in the Dell

Butte, Montana



FASD Communities is now partnering with **Farm in the Dell** in Butte, MT with a strong focus on young adults with FASD

This facility will provide:

- Safety
- Structure
- Animals to care for
- Compassionate staff
- Built in friendship
- Loving and caring environment
- Stepping stones or forever homes
- Mentoring and jobs



"I feel safer here. I wouldn't leave this place for anything."

- Emily (Resident)

